

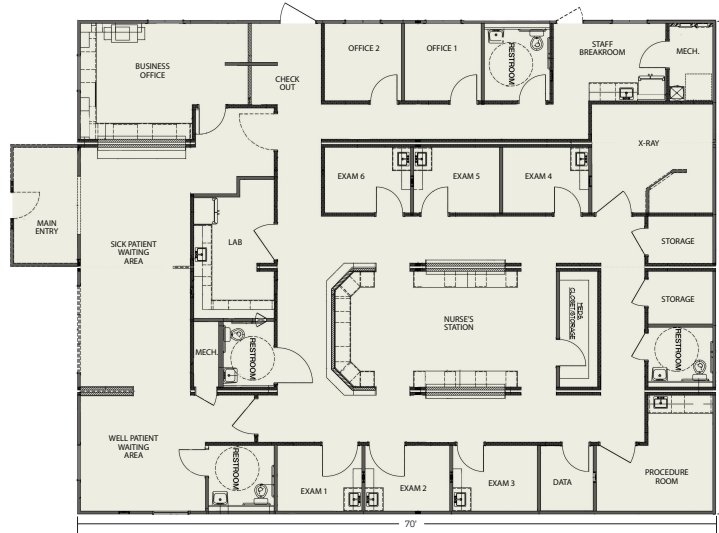
# Medical/Dental Clinics, Labs, and Veterinary Facilities

In addition to micro-hospitals and larger healthcare facilities, we provide smaller, clinic-sized units perfect for smaller practices, specialty medical, laboratories, dental clinics and veterinary facilities.

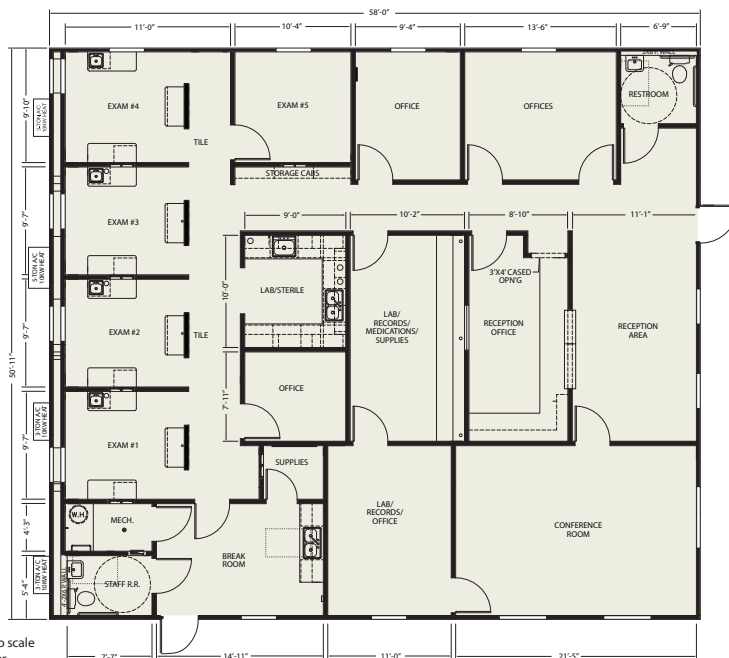
The examples here are just a few of the endless variations and customization that can be designed into our healthcare facilities.



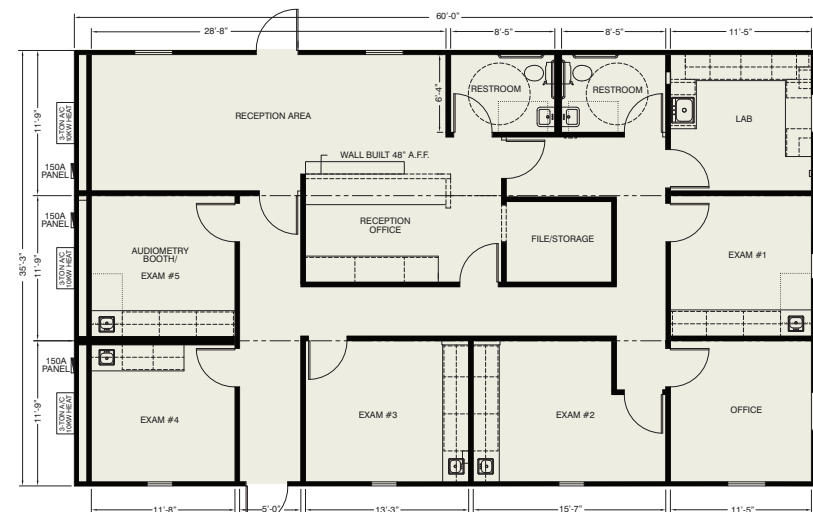
**Model HF4032-A - Healthcare Clinic/Doctor's Office: 4,032\* ft<sup>2</sup>, 56'x70'**



**Model HF2952-A - Healthcare/Dental Office: 2,952\* ft<sup>2</sup>, 51' x 58'**



**Model HF2115-A - Healthcare Clinic/Doctor's Office: 2,115\* ft<sup>2</sup>, 35' x 60'**



\*\*Plans are not to scale to each other



Additional floorplans and more info here

Phone: 855-722-3718  
ellismodular.com  
info@ellismodular.com

\*All square footage listed is approximate.



## 16,000+ ft<sup>2</sup> Modular Medical Facility



## Micro-Hospital/ Medical Center

Example of phased expansion of a Micro-Hospital to demonstrate modular flexibility to meet demands of a growing patient population.

This example illustrates the layout of a typical rural medical facility and expansion due to area population increase or patient-base growth.

This self-contained medical facility is initially designed as a clinic with exam rooms and inpatient rooms for observation as needed. As patient base grows, the modular clinic can be expanded into a micro-hospital offering additional medical services depending on need.

The combination of facilities for expansion are virtually endless—from meeting your initial basic project requirements, to complete custom design and finish out, along with various façade and foundation options. Ellis Modular will work with you and your team to design a modular facility that meets your region's medical needs, expand with you as those needs change, and save you time and money in the process.

**Call Us Today**  
**855-722-3718**

©Ellis Modular, Inc.  
All rights reserved.

### Phased Expansion:

- **Phase I:** 6,010 ft<sup>2</sup>, 7 patient rooms
- **Phase II:** 8,358 ft<sup>2</sup>, 13 patient rooms
- **Phase III:** 10,710 ft<sup>2</sup>, 19 patient rooms
- **Phase IV:** 12,471 ft<sup>2</sup>, 25 patient rooms
- **Phase V:** 16,775 ft<sup>2</sup>, 29 patient rooms, plus ER receiving facilities



**The Source for Affordable  
Healthcare Facilities**

ellismodular.com • info@ellismodular.com